

RLITE-Web

Remote Wireless Data Acquisition System



Key Benefits:

- Remote data logging.
- Graphic Web interface.
- Viewing data from any location.
- Internal 32K non-volatile memory.
- 4 recording inputs: 4-20 mA, Pulse counter, Digital inputs, Transistor output.
- 1 recording output: Relay 5A.
- Modbus support: up to 10 external channel.
- Fully reliable monitoring network
- Cost effective system
- Multiple alarms including SMS to any location
- Using the popular GSM/GPRS network.
- Internal quad-band GSM modem.
- Bi-directional SMS possibility.

RLITE-Web: Remote Wireless Data Acquisition System

No matter where you are in the world, logged data can be sent straight to your web browser. In addition, data can be sent (SMS) to your cell phone to provide you with crucial information instantly.

The RLITE-WEB is a GSM/GPRS remote data logger for direct measurement and external reading of remote devices and sensors. Data is logged in the RLITE-WEB with sample rate of minimum 1 minute and sent to the web server via the cellular network (GPRS).

In addition, the RLITE-WEB provides 24/7 global communication coverage for automatic SMS alert messages, SMS I/O inquiries and SMS I/O settings. Versatile, reliable and quickly configured, the RLITE-WEB is a cost effective RTU [Remote Terminal Unit] Logger, featuring up to 2 A/I, 4 D/I, 2 D/O, 1 RS232/RS485 serial port and automatic data dispatch service to the internet.

RLITE-WEB system comprises of four models meeting a wide range of industry applications:

- RW - 2C: 2 pulse counters, 2 digital input,1 Relay output.
- RW - 2A: 2 analog 4-20ma inputs, 2 digital input,1 Relay output.
- RW - 2O: 2 transistor output, 2 digital input,1 Relay output.

Every module includes Modbus package and serial port from one of the following:

- RS232 port with no flow control.
- RS485 port for multi units.



Water and agriculture



Remote meter reading



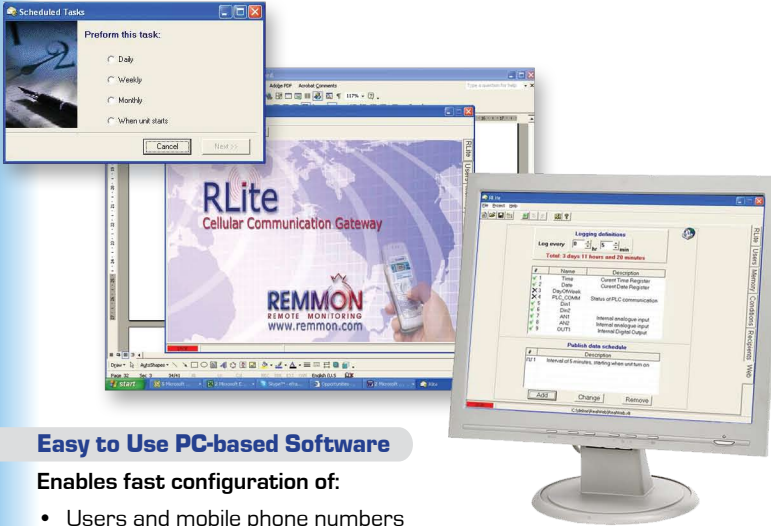
Environment and telemetry

R·LITE-Web

Remote Wireless Data Acquisition System



Software

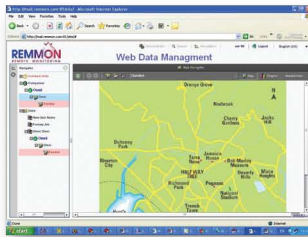
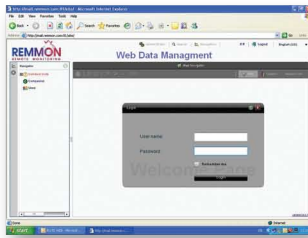


Easy to Use PC-based Software

Enables fast configuration of:

- Users and mobile phone numbers
- Data logging rate and channels (digital/analog)
- SMS alarms

Web server



Effective Management & Control

The secure system enables:

- Protection of user names and passwords
- Management of users and units
- Display customer logos

Unit Location and Map Module

The quick and easy map module displays:

- Unit locations
- Comprehensive data on each unit (display name, serial number, unit ID, etc.)
- Unit zoom

Versatile Data Display

Users have complete control of the data display:

- Graph views customized as required
- Gauge and bar displays
- Real-time data

Description

Specification

R-Lite web Physical Characteristic

Dimension:	104 × 67 × 33 cm
Weight:	200 gram
Assembly:	2 screw handles
Communication interface:	RS232 / RS485

Cellular Network Interface

Modem Type:	Quad band
Internal modem:	Telit 864
Modem Approvals:	Fully type approved according to R&TTE CE, GCF, FCC, PCTRB, IC
Antenna:	Quad band

Electrical Characteristics

Input Voltage:	9-24 DC
Active Current (Transmission):	100mA
Stand by Current:	30mA
Protection:	According to MILSTD-704E

Expansion IO option

RW - 2C:	2 pulse counters, 2 digital input, 1 relay output
RW - 2A:	2 analog 0-20ma inputs, 2 digital input, 1 relay output
RW - 20:	2 transistor output, 2 digital inputs, 1 relay output.

Environment

Operating Temperature	-20 °C to 70 °C
Storage Temperature	-40 °C to 85 °C
Operating Humidity	5% to 95%

Data Logging

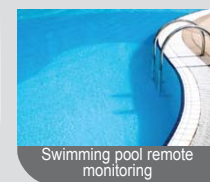
Logger Memory	20KB
Minimum Logging Interval	1 Minute
Maximum Channels Sampling	10
Transferring Data Schedule	Up to 5 tasks
Transferring Data Destination	REMMON website (private user login)
Socket definition	Compatible for DNS definition



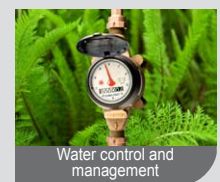
Temperature control delivery



Electricity-Automatic meter reading



Swimming pool remote monitoring



Water control and management